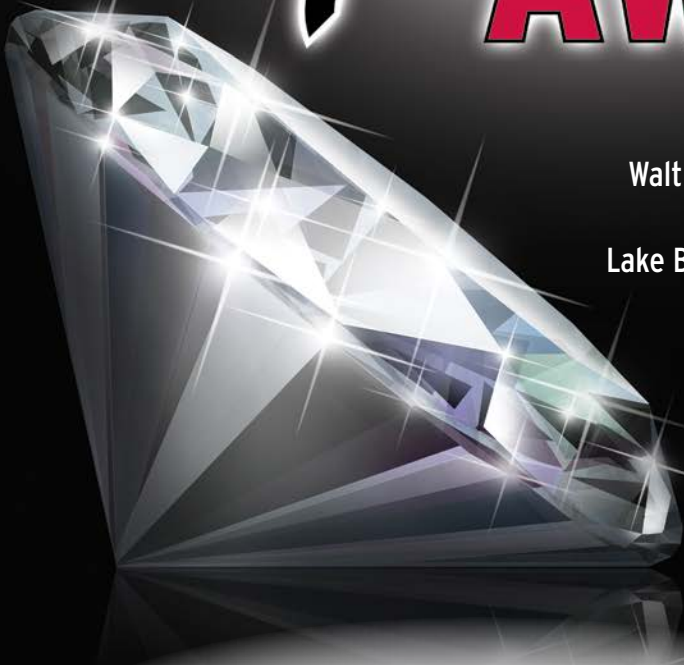




ASSOCIATION OF THE WALL AND CEILING INDUSTRY

AWCI

CONVENTION + INTEx 2018



March 24-28, 2018
Walt Disney World Swan
and Dolphin Resort
Lake Buena Vista, Florida

Like us on Facebook, follow us on Twitter and join us on LinkedIn.





TABLE OF CONTENTS

AWCI President’s Welcome 3

AWCI Opening Session and Awards Brunch Speaker..... 4

AWCI Professional Development Sessions..... 5-12

AWCI Elective Education..... 14-16

Additional Offerings 20-21

Registration Information and Registration Form 22-25

Foundation Raffles and Silent Auction..... 26-28

Convention Events 28-32

- *AWCI Spouse/Guest Reception*
- *AWCI’s White Diamond President’s Reception*
- *AWCI’s 100th Anniversary Opening Session and Awards Presentation Brunch*
- *AWCI’s 100th Anniversary Celebration Night Dinner and Foundation Silent Auction*
- *Tuxedo Rental*
- *Vinyasa Yoga Class*

AWCI’s Convention Sponsors 33

Convention Schedule..... 36-38

INTEX Expo Exhibitors 39

INTEX Expo Sponsors..... 40-41

Welcome to Orlando 42-43

- *AWCI Convention Mobile App*
- *Attire Suggestions*
- *Hotel Accommodations*
- *Travel Information and Things to Do in Orlando*

AWCI’s Centennial Celebration..... 44-45

SFIA 46-47

Hours of Registration

(Registration will be located in the Convention Foyer on the Lobby Level of Walt Disney World Dolphin.)

Sunday, March 25	2 p.m.–6 p.m.
Monday, March 26	8 a.m.–6 p.m.
Tuesday, March 27	7:30 a.m.–5 p.m.
Wednesday, March 28	7:15 a.m.–12:30 p.m.

WELCOME

Dear Colleagues,

Please join me for AWCI's Convention & INTEX Expo in Orlando.



This is a historical convention since it is the 100th anniversary of the founding of AWCI. This year we are pulling out all the stops with a White Diamond President's Welcome Reception at Epcot®, an awards brunch with futuristic leanings, a black-tie Celebration Night Dinner and of course the INTEX Expo trade show providing products and services you need in your business.

We also have education sessions featuring augmented reality and holo lens technology, future technology software trends to make your job easier, how to recognize future leaders, ways to minimize risk with a pre-construction meeting, and much more.

Be sure to stop by the AWCI booth to leave notes in the AWCI time capsule that will be opened by future industry leaders in 100 years. Mark your place in history and leave a legacy for those who come after you.

I urge you to read through the information, reserve your hotel room and register early for what promises to be an outstanding and historical event.

A handwritten signature in black ink, appearing to read 'Ed Sellers', written in a cursive style.

Ed Sellers
AWCI President

Jack Uldrich Global Futurist, Speaker, Author

Jack Uldrich is a well-recognized global futurist, speaker and author of 11 books, including award-winning best sellers. He is a frequent speaker on technology, change management and leadership and has addressed hundreds of corporations, associations and not-for-profit organizations on five continents. He regularly makes television appearances on the Science Channel, the Discovery Channel and is a frequent guest on major media outlets, including CNN, CNBC and National Public Radio.



Jack Uldrich

Uldrich is also an ongoing contributor on emerging technologies and future trends for a number of publications, including The Wall Street Journal, Forbes, Wired Magazine and BusinessWeek.

Uldrich is a former naval intelligence officer and Defense Department official. He served as the director of the Minnesota Office of Strategic and Long-Range Planning under Minnesota Governor Jesse Ventura. His most recent book is “Foresight 20/20: A Futurist Explores the Trends Transforming Tomorrow,” and his forthcoming book is “Business as Unusual: How to Future-Proof Yourself against Tomorrow’s Transformational Trends, Today.”

Meet Jack Uldrich following the Awards Brunch! He will be in USG booth #1337 until 1 p.m. The first 50 people to visit USG’s booth will receive a free autographed copy of his book, “Higher Unlearning: 39 Post-Requisite Lessons for Achieving a Successful Future.”

Sponsored by USG



Augmented Reality Is the New Reality: Practical Applications of AR for Real World Problems

Over the past few years virtual reality has gained popularity among AEC professionals, especially architects. Also, by the growth of devices such as Microsoft HoloLens, mixed reality is becoming a new trend in the industry because it enables the user to have interaction with reality as well.

In this session, you will see some of the practical applications of this technology. We will showcase the HoloLens Apps that were developed at Baker Triangle Prefab and how we are currently using and planning to use this technology in design review, visualization, manufacturing, quality control and marketing.

Bardia Jahangiri is a VD&C specialist with Baker Triangle. Besides VD&C operations such as 3D modeling and coordination, he develops add-ins for Revit, Navisworks and also stand-alone software tools. He is also leading the mixed/augmented reality explorations and develops apps for Microsoft HoloLens. He has a bachelor's degree in architecture and several years of experience in architecture but decided to shift to the construction realm a few years ago. He graduated from Texas A&M University with a masters' degrees in construction management and in land and property development.



David Keane works at Baker Triangle Prefab as a VD&C specialist/project engineer. He has a construction engineering technology degree from the University of North Texas in Denton. Keane started as a VD&C intern with Baker Triangle in 2012 and returned to accept a full-time position in the BIM department in August 2013. Baker Triangle started its prefab division shortly after, and Keane has worked as a project engineer since the division began. He has led several coordination projects recently including Seguin High School Expansion and Renovation, Sheraton Hotel in Georgetown, and United Regions Hospital in Wichita Falls. He has also worked designing exterior finished wall panels for several projects including McCamey Hospital in McCamey, Texas, Medical Center of Arlington, and Aloft/Element Hotel in Downtown Austin.



Generation Next—Identifying Future Leadership and Trade Development

The construction industry has witnessed a deep decline in construction trade focus within schools and family systems as emphasis alternatively shifted toward higher education initiatives. As a result, our industry is experiencing an aging labor market with a shortage of skilled tradesmen.

Some items that will be covered in this session include the following:

- Key Industry Labor Statistics—Exploring growth trend evolution in relation to age, background and discipline.
- The “Exit-stential” Crisis—A look into how aging company executives contribute to consolidation and the decline of independent organizations.
- Looking Ahead—Identifying upcoming leadership and integrating New Age values into traditional infrastructure. Examining your role in the future.

Alana Parker is a third generation wall and ceiling distributor, taking over management of her grandfather’s business at the peak of the recession in 2010. As a 25-year-old, newly pregnant woman with limited industry experience, it was truly a “Hail Mary” effort to save the business. Over three years, she worked relentlessly to restore the company to a profitable and responsible organization, building key relationships within the industry and community. In 2016, at 31 years old, she purchased 100 percent of the stocks from her grandfather, stepping forward as the youngest independent distributor in the United States. That same year, she was honored by the local Chamber of Commerce as the Young Professional of the Year, recognized for her community development and industry educational efforts.



Right from the Start

You can often win or lose the battle before it's even begun. That's why it's essential to focus on conducting a quality pre-construction meeting. If you do it right from the start, you'll get it right in the end. In this program, participants will learn how to align expectations, develop win-win relationships and minimize risk at the beginning of the job. When you understand and prepare for the job at hand, you can avoid risks that cause

- Higher insurance premiums or loss of coverage.
- A disorganized job that leads to major schedule delays and loss of profits.
- Hazardous job sites.
- A negative image in the industry that costs you future work.

Norb Slowikowski is a productivity consultant who has been working in the construction industry for over 30 years. Prior to starting his consulting business, Slowikowski served as director of manpower development for McDonald's Corporation. He has assisted over 450 contractors in improving productivity and maximizing profitability by focusing on the following activities:



- Training more than 30,000 foremen, superintendents and project managers in management and leadership skills.
- Working with contractor associations around the country in presenting supervisory skills development courses to their membership.
- Serving as an organizational consultant to construction companies in the United States and Canada helping them to reorganize to maximize productivity at all levels of the company.
- Customizing training programs to meet specific contractor needs.

Slowikowski serves as a key instructor for AWCI's Project Manager Development Series.

He is also the author of the recently published book, "Hard-Hat Productivity: The 9 Critical Factors for Maximizing Profits."

OSHA Silica Rule Compliance

OSHA started enforcement of its very broad and confusing silica rule on Sept. 23, 2017, and in some areas it affects the wall and ceiling industry. AWCI has been an active member of the Construction Industry Safety Coalition, which has been working with OSHA to clarify how to respond to the rule. AWCI will sponsor a panel of members to discuss the rule and how their companies are responding including objective data, silica exposure control plan and competent person training. Also, learn about the tools AWCI is providing to its members to better protect their field force and follow the rule.



The Way to Go: Panelized Load-Bearing Design

This session will provide a case study of the load-bearing CFS mid-rise project in Green Bay, Wis., that was designed in 2015–2016 and opened in December 2016.

Project Description:

- Eight stories total with seven stories of load-bearing CFS over a pre-cast podium level.
- CFS joist floors with 9/16" centering deck and a lightweight topping.
- All walls and floors panelized.
- Prefabricated flat CFS roof trusses.
- CFS distribution members located at truss bearing to account for the off-module spacing of the trusses versus stud walls.
- Mix of CFS X-braced shear walls and precast concrete shafts for lateral support.
- Inset, cantilevered steel balconies and diagonal tie-rod steel balconies both supported on CFS posts.

Pat Hainault is a principal at Matsen Ford Design Associates, Inc. He is a registered Professional Engineer in Wisconsin and in numerous other states. He is a member of the American Society of Civil Engineers, the Cold-Formed Steel Engineers Institute and the Steel Framing Industry Association, and a corresponding member of the technical committees of the American Iron and Steel Institute and SFIA.



His professional experience includes staff management and engineering design with Matsen Ford Design. He has also been a structural designer for a concrete reinforcement supplier and a technician for a national material testing firm. His work in these positions has involved structural design, shop drawing preparation, technical report writing, contract and project management duties on a wide variety of commercial, industrial, multifamily residential and institutional building projects, in addition to sales and marketing.

In the structural design field, his experience includes the application of the latest technologies and design concepts to a variety of both primary and secondary structures including a variety of prefabricated systems. Hainault's engineering systems design experience includes structural steel, reinforced concrete, engineered masonry and wood, in addition to specialty expertise in cold-formed steel. He has designed buildings throughout the country.

Tame the Flame: A Close Look at Exterior Wall Flammability with a Focus on NFPA 285

There are several changing factors within building and construction that cause us to take a closer look at exterior wall flammability. Regulation changes, recent fire events around the world, needs for energy efficient (green) construction and plans for new tall wood building construction have continued to drive discussion and debate over the issue of rapid fire progression on exterior wall construction materials. To better understand the exterior wall flammability issue and move toward solutions, this presentation will 1) discuss the factors that influence building construction, 2) provide an understanding of certain fire tests that are sometimes misconstrued as suitable for the evaluation of exterior walls and 3) examine the importance of selecting tests for specific regions, codes and regulations. We will also focus on a prominent exterior wall test method, NFPA 285, and how compliance with these test requirements and codes are driving safety of exterior wall construction within the US.

Typically, the acceptance of wall systems (when tested to exterior wall methods) involves a fairly complex review of building code interpretation, individual component manufacturer's test reports, engineering analysis and application of the manufacturer's installation instructions. This presentation will also discuss UL's certification documents for Exterior Wall Systems & Components and demonstrate how this new approach meets the needs of manufacturers, architects, specifiers and code officials for an accessible, up-to-date method of determining code compliance of exterior wall systems evaluated to NFPA 285.

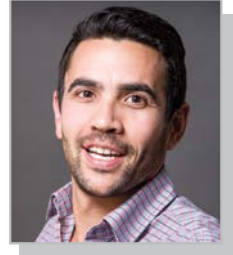
Dwayne Sloan is the manager of principal engineers for building materials and suppression at UL LLC. He is an Active NFPA member and serves on several NFPA technical committees, including the Fire Test Committee responsible for NFPA 285. He is the voting member of Reaction to Fire and Commercial Kitchen Ventilation UL Standards. He also participates heavily in various ASTM committees and is the 2nd vice president of ASTM E05, Committee on Fire Standards. Sloan was recently recognized by UL as a Corporate Fellow within the William Henry Merrill Society, named in honor of UL's founder.



Future Trends and Emerging Technologies in the Market

What's new in construction technology? Where is the industry in general moving? Why is integration between software important? These questions and many more will be explored in this entertaining and informative presentation.

Benny Baltrotsky is the chief strategy officer of eSUB Construction Software, a cloud- and mobile-based project management solution for subcontractors. Baltrotsky's background as a mobile technology consultant, having spent years on the tech forefront of software, advising Fortune 500 companies such as Best Buy and State Farm. Benny's knowledge of mobile technology as well as his experience with the construction industry gives him a unique understanding of where technology has been and how it will weave itself into the future of construction. He has spoken at national events for organization such as NECA, AGC and BuiltWorlds.



Kyle Hamer leads marketing programs, brand management and website development for On Center Software. Prior to joining the company, he spent several years in the coatings trade and worked for a general contracting business. Since then, he has invested the last 15 years in strategic sales and marketing management for startups, turnarounds and market expansions for over 40 companies.



John Paul Milciunas, CEO of The Estimating Edge, came from Accelerator Ventures (AVC) where he led early stage technology investments in Silicon Valley and New York City. Prior to AVC, he was at Yahoo!, where he worked in strategic partnerships and business development. And prior to Yahoo he served as chief executive officer of SPI Dynamics, a pioneer in the Web application security industry, which was acquired by Hewlett-Packard in 2007. He has over 18 years' experience working with advanced technology companies.



continued

Brian Moore is a transformational entrepreneur with a passion for innovation and customer value. He is the co-founder and president of Kahua, the creator of the world's only collaborative network for real estate and construction project management. Prior to Kahua, Moore was co-founder of Constructware, the first cloud-based SaaS solution for construction project management. He was also co-founder and president of Compliance 360, where he helped major corporations streamline and manage their risk and compliance programs.



Chad Pearson has been the director of business development for Plexxis Software since 2007. His education spans a degree in sociology from the University of Guelph, to police training systems and crisis resolution. He started his career in office automation, moved into law enforcement and then business development for construction automation where he joined Plexxis in their mission to unite specialty contractors.



USG
Interior
Panel &
Finishing
Solutions



THE NEXT BIG THING IN WALLBOARD.
USG Sheetrock® Brand EcoSmart Panels

The industry's lightest wallboard is now the most sustainable.
Learn more at usg.com/eco

Visit us in
Booth 1337



© 2017 USG Corporation and/or its affiliates. All rights reserved. The trademarks USG, SHEETROCK, IT'S YOUR WORLD. BUILD IT., the USG logo, the design elements and colors, and related marks are trademarks of USG Corporation or its affiliates.

GREENGUARD Certified products are certified to GREENGUARD standards for low chemical emissions into indoor air during product usage. For more information, visit ul.com/gg.

USG
IT'S YOUR WORLD. BUILD IT.®

Elective Education 2018 (additional registration fees apply)

Invest in your knowledge! AWCI is offering attendees an opportunity to increase their knowledge by attending a Doing It Right seminar on March 28. These seminars (exterior envelope, gypsum and stucco) were developed for owners and upper and middle management—project managers, foremen and estimators.

Each seminar provides seven hours of education and will be held from 7:30 p.m. to 5 p.m. on Thursday, March 30. There will be a break from 10 a.m. to 1 p.m. so participants can walk the trade show floor and have lunch.

Registration for a Doing It Right seminar includes a complimentary trade show pass to INTEX Expo on March 27 and 28, 2018. Register by Feb. 28, 2018, to receive the early bird discount of \$315 for AWCI members and \$405 for non-members. Registration fees after Feb. 28, 2018, are \$415 for AWCI members and \$505 for non-members.

Exterior Envelope–Doing It Right®

Even though energy codes have been in place for several years now, they continue to be a source of confusion for architects and contractors as they design, bid and install exterior walls. The International Energy Conservation Code® has made these exterior wall systems more complex to design and construct. The new code's continuous insulation requirement, combined with ever-changing ASTM and ASHRAE construction standards, are presenting major design and construct challenges. Today's architects need to know how to design to meet the IECC requirements. They must also provide solutions when details aren't always available. This forces contractors to struggle with constructing exterior assemblies with cladding over multiple inches of continuous insulation and highly complex air and water barriers.

This program will clarify the subtle but significant differences between the IECC and ASHRAE 90.1 and how that relates to LEED® initiatives. Moisture migration and heat transfer are the fundamental elements that drive the codes and standards, and they, too, can be confusing. Codes, standards and building science link to high performance wall systems, which are substantially more sophisticated than what was designed and built just a few years ago. Sophisticated high performing wall systems rely heavily on proper detailing and installation. This course starts with codes and standards, discusses the underlying building sciences, and ends with information for the job site with a goal to make a project successful.

Robert Grupe, AWCI's director of technical services, spent more than 38 years with United States Gypsum Company where he held various technical and management positions. Activities included product and system design and technical consultation to the AEC community. He currently is a consultant to the construction community where he has worked on several large scale international construction projects. He has authored numerous articles and given presentations on fire, sound and environmental issues as they relate to wall and ceiling assemblies.



Gypsum—Doing It Right®

This seminar is based on industry standards and best practices for the installation of gypsum board systems. Developed under the guidance of an expert oversight group made up of contractors and manufacturers, a few of the topics covered include codes and standards, design issues, types of gypsum systems, red flags and solutions, finish systems and project management/quality control.

Michael Logue's 35 years of experience in construction began as a lather with the United Brotherhood of Carpenters and Joiners. For 13 years he was director of technical services at the Western Wall and Ceiling Contractors Association and served on numerous technical committees and speaking panels. Logue has served on the ASTM committee C11 since 2000 and has participated on dozens task groups. At Western Partitions, where he is the pre-construction manager, Logue provides technical oversight for estimating, project management and WPI prefab.



Stucco—Doing It Right®

This seminar is based on ASTM C926 and C1063 and covers the application of portland cement-based plaster applied to metal and solid bases. Developed under the guidance of an expert oversight group made up of contractors and manufacturers, some of the topics covered include codes and standards, substrates, design considerations, materials, weather concerns and limitations of material/stress control/cracking.

*In 2002, after 40 years successful experience as a plaster and drywall subcontractor, **Mike Boyd** formed Boyd Consulting Group. His company serves architects, building owners, developers, property managers, general contractors, exterior wall subcontractors, attorneys, insurance companies, real estate agents and homeowners. He is a Certified EIFS Inspector as certified by AWCI, the Exterior Design Institute and the Moisture Warranty Corporation.*



Wednesday, March 28 7:30 a.m.–5 p.m.

Course break from 10 a.m. to 1 p.m. for lunch and walking trade show floor.

Exterior Envelope—Doing It Right®

Gypsum—Doing It Right®

Stucco—Doing It Right®

USG
Ceiling
Solutions

FOR WHEN EVERY WORD NEEDS TO BE HEARD.

USG Mars™ High-NRC/High-CAC Acoustical Panels deliver balanced acoustics with a sound absorption NRC of up to 0.90 and sound attenuation CAC of up to 40. Plus they feature a high light-reflective finish, outstanding sag resistance and are GREENGUARD Gold certified for low emitting performance.

Learn more at usg.com/ceilings

USG Mars™ High-NRC/High-CAC Acoustical Panels

© 2017 USG Corporation and/or its affiliates. All rights reserved. The trademarks USG, MARS, IT'S YOUR WORLD. BUILD IT., the USG logo, the design elements and colors, and related marks are trademarks of USG Corporation or its affiliates.



IT'S YOUR WORLD. BUILD IT.®

Visit us in Booth 1337

© 2017 Clark/Dietrich Building Systems



FIGHTING THE
LITTLE HASSLES

TAKES STRONG ALLIES.

**HERE'S TO AWCI FOR A CENTURY
OF MEETING CHALLENGES HEAD-ON.**

No one knew what a Kleptognome was back in 1918.
But even before we ID'd these ugly Hassles, leaders like AWCI were
doing battle to end wall and ceiling nightmares. Today, ClarkDietrich
is continuing the fight with solutions like Clip ExpressSM—a huge lineup
of connectors, clips and accessories available overnight.
See how at stopthehassles.com.

Visit us in Booth 1405



ClarkDietrich
BUILDING SYSTEMS

clarkdietrich.com

[#stopthehassles](https://twitter.com/stopthehassles)



Second Year!!

Tuesday, March 27, and Wednesday, March 28, during exhibit hall hours

INTEX Expo Wellness Lounge

Stop by and have a head and neck massage, re-hydrate at the water and juice bar, or step away from the trade show hubbub and soothe yourself with an adult coloring book.

*Massage Station
sponsored by CEMCO*



Wednesday, March 28, during exhibit hall hours

Solutions Showcases in the Exhibit Hall

Think of it as a TED talk for the drywall and ceiling industry. Fifteen-minute presentations will give you pointers and solutions you can take back and use. The following solutions will be presented:

10:15 a.m. to 10:30 a.m.

Elite and Lean Team Intelligence

Four simple ways to create elite team culture and technological superiority.

Presented by Plexxis Software



10:45 a.m. to 11 a.m.

Bringing Digital Solutions to the Field

How BIM, augmented reality and mobile tools are changing workflow in the field. An overview of what is already available and what the future holds for the digitally oriented contractor.

Presented by ClarkDietrich Building Systems



11:15 a.m. to 11:30 a.m.

Future of Estimating

“High tide floats all boats.” Today’s growing economy is creating more work than the current contracting network can build. Yet, winning a project has never been more complicated than it is today. 3-D modeling, drones, project scanning and other technological advances are putting pressure on contractors to adapt in order to maintain their backlog.

During the session we’ll cover the following:

- Finding and identifying the right projects.
- Incorporating new tech without breaking the bank.
- Hands-free estimating.
- Maximizing the profit of each project.

Presented by On Center Software



Registration Options

You can register online at www.awci.org/convention or return pages 23, 24 and 25 with a check or credit card information to AWCI's Convention & INTEX Expo, 11208 Waples Mill Road, Suite 112, Fairfax, VA 22030; phone: (703) 449.6418. If you pay by credit card, you may fax your registration to (703) 574.8332. DO NOT mail a duplicate copy if you fax. We will email, fax or mail you a confirmation of your registration. If you are bringing additional registrants, ordering additional tickets for meal functions or events or registering others in your company, please photocopy and complete a separate registration form for each individual. Do not register more than one person (except spouse/guest) per form.

Under 35 Discount

AWCI is encouraging younger members of the industry to attend the convention with a targeted discount. We are offering a 25 percent discount off the full convention registration for anyone younger than 35 to attend. To receive this discount complete the information on the registration form (pages 23-25) or register online at www.awci.org/convention and indicate if you are younger than age 35 to receive the discount. **Proof of age will be required at on-site registration when you pick up your badge.**

Cancellation Policy

If you must cancel, your registration fees will be refunded in full less a \$100 processing fee if we receive your cancellation in writing by February 28, 2018. Trade show passes will be refunded prior to February 28, 2018, in full. No refunds will be issued after February 28, 2018, or for no-shows. Tickets for convention events, Foundation events and tours and activities are not refundable.

Suitcasing Policy

Please note that while all meeting attendees are invited to the exhibition, any attendee who is observed to be soliciting business in the aisles or other public spaces, in another company's booth, or in violation of any portion of AWCI's INTEX Expo rules will be asked to leave immediately. Additional penalties may be applied. Please report any violations you may observe to show management.

Photography Policy

By registering, you agree to allow AWCI/CISCA/INTEX to use your name, photograph, image and/or likeness taken during the convention and expo in any AWCI/CISCA/INTEX marketing materials made public via print or electronic publications or website. You understand that your likeness may be used in publications after your participation or membership in AWCI/CISCA/INTEX.

Badge Pickup

Please note: Each individual must show I.D. and pick up their own badge.

Questions?

Call AWCI Registration at (703) 449.6418 or email awciregistration@jspargo.com.

AWCI REGISTRATION FORM

Please answer the following questions:

What is your business?

(Please check all that apply.)

- Contractor
 - Manufacturer
 - Supplier/Distributor
 - Architect/Specifier
 - General Contractor
 - Independent Manufacturer's Rep
 - Service Associate
 - Other (Please specify)
If other chosen, text required.
-

What is your primary business?

(Please check all that apply.)

- Access Floors
 - Ceilings/Acoustics
 - Drywall
 - EIFS
 - Fireproofing
 - GRG
 - Insulation
 - Lath/Metal Framing
 - Plaster
 - Spray Textures/Paint
 - Stucco
 - Windows/Doors/Trim
 - Other (Please specify)
If other chosen, text required.
-

What is your title/function?

(Please check one.)

- Owner/Partner
 - President
 - Vice President
 - General Manager
 - Superintendent/Foreman
 - Project Manager
 - Estimator
 - Field Personnel
 - Sales
 - Marketing
 - Other (Please specify)
-

What is your firm's annual dollar volume?

Only Aggregated Date is Reported

(Please check one.)

- Under \$1 million
- \$1 million - \$5 million
- \$5 million - \$10 million
- \$10 million - \$20 million
- \$20 million - \$50 million
- \$50 million - \$100 million
- Over \$100 million

How did you hear about the INTEX Expo?

(Please check all that apply.)

- AWCI's Construction Dimensions
 - AWCI Website
 - CISCA Website
 - Direct Mail
 - E-mail
 - INTEX Expo Website
 - Referral
 - Other (Please specify)
If other chosen, text required.
-

How many INTEX Expos have you attended in the past ten years?

- First Time
- 2-3
- 4-5
- 6-10

AWCI Registration Form



Attendee Information Please photocopy this form for each additional registrant, or register online at www.awci.org/events/awci-convention/register.

Name _____ formal first _____ last _____ badge first name _____

Company _____

Address _____

City/State/Province _____ ZIP _____

Phone _____ Fax _____

Email Address _____ Cell (required for emergencies only) _____

Spouse/Guest (list only if paying to register) _____ (An additional company employee is not considered a spouse/guest.)

Spouse/Guest Badge Name _____ Spouse/Guest Email Address _____

Fees & Payment (payable in U.S. Dollars)

Your Best Value: Full and Spouse/Guest Registrations (includes entrance into all convention events, education sessions and INTEx Expo.)

	Early Bird On or Before 2/28/18	Regular After 2/28/18	Amount
--	---------------------------------	-----------------------	--------

AWCI Member			
Full Convention 1st person (FULL)	\$.765	\$.985	
Full Convention 2nd or more same firm (FULL)	\$.600	\$.765	

Any promo codes? _____

Under Age 35 (FULL)\$573.75 (25% discount) \$738.75 (25% discount)..... _____

Proof of age will be required at onsite registration when you pick up your badge.

Spouse/Guest (SG01)\$195 \$215 _____

Industry Rate - Full Convention (FULL)\$1,530 \$1,970

Convention Events (INCLUDED) in Full and Spouse/Guest registration)
AWCI President's Welcome Reception (PR) 3/26 How many? .. \$200 per person
AWCI Opening Session and Awards Brunch (OB) 3/27 How many? .. \$125 per person
AWCI Celebration Night (DC) 3/27 How many? .. \$200 per person
Education Sessions 3/27 and 3/28 How many? .. \$300 per person

INTEX Expo Trade Show Pass Only (INCLUDED) in Full and Spouse/Guest registration)
Tuesday, 3/27 (TSTUE) \$55 Wednesday, 3/28 (TSWED) \$55 Both Days, 3/27 & 3/28 (TS) \$95

Early Bird On or Before 2/28/18 Regular After 2/28/18

Elective Education 3/28 (✓ which seminar attending)
 Exterior Envelope—Doing It Right® Gypsum—Doing It Right® Stucco—Doing It Right®
AWCI Member (SEM1)\$315 \$415
Non-Member (SEM1)\$405 \$505

SFIA General Session (SFIA) 3/26 How many? .. \$0

Foundation Tickets
Auto Raffle Tickets (A1) How many? .. \$100 each Total
Auto Raffle Tickets Multiples (A5) How many sets of five? .. 5 for \$400 Total
Jewelry Raffle Tickets (J1) How many? .. \$25 each Total
Jewelry Raffle Tickets Multiples (J5) How many sets of six? .. 6 for \$125 Total

Any special assistance needed or dietary restrictions? (Please describe)

Method of Payment Check Visa MasterCard American Express
Card No. _____ Exp. Date _____ Security Code _____

Name on Card _____ Signature _____

- I have read and understand the INTEX Expo Suitcasing Policy** (see page 22).
- I have read and understand the Photography Agreement** (see page 22).

Show Your Support for the Foundation
AWCI celebrates 100 years and the Foundation is celebrating with glitzy raffles.

Two opportunities to win!

Raffle winners will be selected during AWCI's Celebration Night Dinner on Tuesday, March 27. You do not need to be present to win. The winning tickets are valid only for the items being raffled and is not redeemable for cash.

All raffle tickets ordered in advance can be picked up at registration. Tickets will be available for purchase on-site at the registration desk and during AWCI's Celebration Night Dinner. Contact Annemarie Selvitelli at (703) 538.1608 or selvitelli@awci.org.

Foundation Auto Raffle

Sponsored by



Show your support for the Foundation of the Wall and Ceiling Industry by participating in the Foundation Auto Raffle. Tickets can be purchased with your registration. Each ticket is \$100, or buy five chances for \$400. Need a new set of wheels to drive on the weekend? This 1967 Chevy Camaro (valued at \$30,000) can be your new ride—if you buy the winning ticket.

- Clear coat rally red paint
- Correct black RS interior
- Console with courtesy light
- Redline radial tires
- 327 cubic inch V-8
- Two speed automatic transmission
- Stock non-power assist drum brakes

The auto raffle is sponsored by Grabber Construction Products. Proceeds will be split 50-50 between Wounded Warrior Project® and the Foundation.

AWCI CARES Jewelry Raffle

Beauty and Sparkle!

What makes this ladies' diamond and sapphire ring/pendant stand out from the rest is that its center stone is a rare natural sapphire! To many, the light yellow 6.58-carat round sapphire looks like a diamond.

Surrounding this magnificent sapphire are 98 round diamonds (.95 carats) and 32 natural hand selected calibrated baguette diamonds (1.05 carats) in a style called "The Ballerina." Channel-set baguettes surround the center stone to form a skirt that resembles a ballerina's tutu. The tutu effect is best shown with tapered baguettes so the skirt appears to flow out from the girdle of the center stone.



The uniqueness of this ring is in the way it was designed as it can be worn as a ring as well as a pendant. The mounting is 18 karat gold, and it is custom designed by GeVandov Design Studio, Dallas.

This must-have piece is comfortable to wear and will be sized for the winner. It also comes with a jewelry appraisal and G.I.A. certificate. The retail value of this fabulous piece of jewelry is \$27,450.

AWCI CARES is a program managed by the Foundation to provide financial support to members of our association in times of financial crisis. Tickets are \$25 each or six for \$125.

Sponsored by



RICHTER SYSTEM®



Silent Auction

Participate in the Foundation of the Wall and Ceiling Industry's annual silent auction with proceeds going to the Foundation's education and research programs. Auction items in the past have included dazzling jewelry and ladies accessories, sporting equipment, vacation packages, high-end tools and equipment, and electronics. The silent auction will coincide with the cocktail hour during AWCI's Celebration Night Dinner on Tuesday, March 27. Bid items will be on display and will be sold prior to the start of dinner.



To donate an item to the silent auction, contact Annemarie Selvitelli at (703) 538.1608 or selvitelli@awci.org.

The mission of the Foundation of the Wall and Ceiling Industry is to be an active, unbiased source of information and education to support the wall and ceiling industry.

CONVENTION EVENTS

AWCI Spouse/Guest Reception

Sunday, March 25 • Noon–2 p.m.

Enjoy a cool beverage and mouth-watering appetizers while catching up with old friends and making new friends at this complimentary welcome reception hosted by AWCI's first lady, Rosie Sellers. Enter the raffle for a chance to win a fabulous door prize. *Dress is resort casual.*



AWCI's White Diamond President's Reception

Monday, March 26 • 6:30 p.m.–10 p.m.

Offsite: Epcot® American Adventure Rotunda

Buses will depart from the entrance doors near the Europe 2 meeting room on the Lobby Level of the Walt Disney World Dolphin **promptly at 6:30 p.m.** **You must check in before boarding the bus to receive your entry bracelet.**



As to Disney properties/artwork: © Disney.

Hosted by AWCI President Ed Sellers and first lady Rosie Sellers, this is your opportunity to network with colleagues and catch up with old friends—a great way to kick off AWCI's 100th anniversary annual convention and INTEX Expo. Heavy hors d'oeuvres and cocktails will be served.



As to Disney properties/artwork: © Disney.



As to Disney properties/artwork: © Disney.

Please note: you must be registered to attend this reception no later than March 15, 2018. Due to security measures and facility capacities at Epcot®, RSVPs are required. An email will be sent to all full AWCI convention registrants and those purchasing reception tickets to confirm your attendance one week prior. **You must confirm with AWCI via this email that you will be attending in order to board the bus, be admitted to the park and to receive an entry bracelet.**

Attire: Business casual, with white attire optional

Be sure to pick up your badge and bring it to the event before registration closes on March 26 at 6 p.m. Badges will be scanned for entrance to the event.

Sponsored by ClarkDietrich Building Systems and Hilti



AWCI's 100th Anniversary Opening Session and Awards Presentation Brunch

Tuesday, March 27 • 9:30 a.m.–12:15 p.m.

AWCI Awards Brunch speaker, futurist Jack Uldrich, will discuss what's coming down the pike globally and within the construction industry to help you forecast and prepare your business.

And, come and see who the big winners are this year! The program includes the opening address presented by AWCI President Ed Sellers, and presentations of AWCI's awards. If you are registered as a full attendee, be sure to pick up your badge and bring it to the event. If you are a trade show-only attendee or exhibitor, pre-register or purchase a ticket for this event prior to 9 a.m. at INTEX Expo registration. Badges will be scanned for entrance to the event.



Jack Uldrich

Meet Jack Uldrich following the Awards Brunch! He will be in USG booth #1337 until 1 p.m. The first 50 people to visit USG's booth will receive a free autographed copy of his book "Higher Unlearning: 39 Post-Requisite Lessons for Achieving a Successful Future."

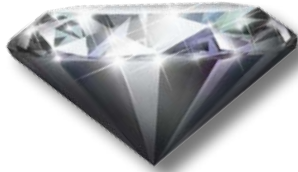
Sponsored by USG



Attire: Business Casual

AWCI's 100th Anniversary Celebration Night Dinner and Foundation Silent Auction

AWCI's Black Tie Soirée
Tuesday, March 27 • 6 p.m.–11 p.m.



Be part of history by attending AWCI's 100th anniversary Celebration Night Dinner and Foundation Silent Auction!

Be sure to be seated no later than 6:15 p.m. so a group photograph can be taken for posterity.

Bid on silent auction items and then dance the night away to the upbeat music of the Epic Party Band, one of Orlando's hottest dance bands.



If you are registered as a full attendee, be sure to pick up your badge and bring it to the event. If you are a trade show-only attendee or exhibitor, pre-register or purchase a ticket for this event prior to 5 p.m. at INTEX Expo registration. Badges will be scanned for entrance to the event.

Contact Annemarie Selvitelli at (703) 538.1608 or selvitelli@awci.org to make a donation to the silent auction.

Attire: Black tie (tuxedos for men, formal dress or slacks outfits for women)

Sponsored by National Gypsum



continued

AWCI's Black Tie Soirée *(continued)*

Tuxedo Rental

Men's tuxedos can be rented from Jos. A. Bank using the **AWCI Group number 7647235**. This code provides a \$40 discount off your rental package and delivery to the Walt Disney World Dolphin Hotel. You may be measured and fitted at a Jos. A. Bank store in your area. **To find your nearest store visit josbankformal.com/store-locator**. Payments must be made in full at the time of fitting to ensure delivery to the hotel. **The fitting deadline is Tuesday, March 20**, or you will incur a \$20 rush fee.

Tuxedo pickup will take place the following times in a designated meeting room of the Walt Disney World Dolphin:

Monday, March 26	Noon to 6 p.m.
Tuesday, March 27	10 a.m. to 4 p.m.

Tuxedo return will take place:

Wednesday, March 28	9 a.m. to Noon
---------------------	----------------

Vinyasa Yoga Class

Wednesday, March 28 • 9 a.m.–10 a.m.

Back by popular demand, AWCI will offer a Vinyasa Yoga class for beginners and advance levels. Vinyasa Yoga is a flowing, dynamic sequence of poses that is one of the most popular styles of yoga in the United States. Come to the class to enjoy the benefits of yoga. You will leave feeling more energized and more relaxed as you start out your day. Bring your yoga mat. No mat, bring a towel to put on the carpeted floor.

Steven Etkin, RYT-200, is a registered yoga instructor with the Yoga Alliance®. He has been practicing yoga for many years and enjoys getting others to experience the benefits, especially for those looking for non-impact exercises to improve flexibility, strength and balance. He started practicing yoga to help with injuries suffered during 15 years of refereeing teenage and adult soccer matches. He recently hung up his referee whistle and now devotes more time to practicing yoga. In his day job, Etkin is executive vice president and CEO of the Association of the Wall and Ceiling Industry and the Foundation of the Wall and Ceiling Industry, where he has spent the last 22 years helping to grow both the association and the Foundation to make the industry a better place for members to operate a business.

AWCI CONVENTION 2018 SPONSORS

Special thanks are extended to the following AWCI convention sponsors:

(as of November 16, 2017)

Platinum Level



Gold Level



Silver Level



The logo for L&W Supply, featuring the text "L&W" above "SUPPLY" in a white, sans-serif font, centered within a red square with a blue horizontal bar at the bottom.

Bronze Level



**HIGH-PERFORMANCE DRYWALL
FOR EVERY ROOM IN THE HOUSE.**





PURPLE

EVOLVE YOUR WALLS™

The PURPLE® XP® family of drywall products stands up to mold, moisture, abuse, impact and can even reduce noise heard between rooms. So if blaring TVs, overflowing bathtubs or uncontrolled lacrosse sticks are part of your world, let our family help your family. PURPLE walls are ready for life.

XP®

Hi-Abuse® XP®

Hi-Impact® XP®

SoundBreak® XP®

ProForm® XP® Interior Finishing Products

PermaBase® Cement Board

National 
Gypsum®

VISIT US AT BOOTH 1227

Technical Info: 1-800-NATIONAL or visit purpleproducts.info

The color PURPLE® is a registered trademark of
National Gypsum Properties, LLC

SCHEDULE



(As of 11-16-17 – Subject to change)

Saturday, March 24

- | | |
|---------------------|---------------------------------------|
| 8:30 a.m.–2 p.m. | Executive Committee Meeting* |
| 4:30 p.m.–5:30 p.m. | Committee of Past Presidents Meeting* |

Sunday, March 25

- | | |
|---------------------|--|
| 8:30 a.m.–10 a.m. | Strategic Planning Committee Meeting* |
| 9 a.m.–10 a.m. | EIFS Curriculum and Examination Committee Meeting |
| 9 a.m.–9:30 a.m. | Education Committee Meeting |
| 9:30 a.m.–10 a.m. | Convention Committee Meeting |
| 10 a.m.–10:30 a.m. | Hospitality Committee Meeting |
| 10 a.m.–10:30 a.m. | Social Media Advisory Committee Meeting |
| 10 a.m.–2:30 p.m. | Construction Technology Council and Committee Meetings
Council Overview
Steel Framing Committee
Gypsum Board Committee
Plaster & Lath Committee
Break
Tech Update - NFPA 285
Break
EIFS Committee
Exterior Envelope Committee
CM Technology Committee
Specialty Products Committee
Council Wrap-up |
| Noon–2 p.m. | Spouse/Guest Reception |
| 2 p.m.–6 p.m. | INTEX Expo Registration Open |
| 2:30 p.m.–3:30 p.m. | AWCI CARES Executive Committee Meeting* |
| 3 p.m.–6 p.m. | Union Contractors Council Meeting |
| 3:30 p.m.–4 p.m. | AWCI CARES Corps Meeting |
| 4 p.m.–6 p.m. | SFIA Manufacturers Council* |
| 5 p.m.–6 p.m. | Continuing Study Committee Meeting |
| 7 p.m. | Past Presidents' Dinner* |

** Assigned Members or Invitation Only*

SCHEDULE

Monday, March 26

8 a.m.–Noon	SFIA Board of Directors' Meeting*
8 a.m.–10 a.m.	Supplier & Manufacturer Members Committee Meeting
8 a.m.–10 a.m.	Union Craft Committee Meetings
8 a.m.–9 a.m.	AWCI-FCA Finishers' Craft Committee
9 a.m.–10 a.m.	Plasterers' Craft Committee
10 a.m.–6:30 p.m.	INTEX Expo Registration Open
10:15 a.m.–1 p.m.	AWCI Chapter Executives Forum*
10:15 a.m.–1:15 p.m.	Prefabrication Business Forum*
10:15 a.m.–1:15 p.m.	Labor Relations Business Forum (open to signatory contractors)
1 p.m.–2 p.m.	Foundation Board of Directors Meeting*
1 p.m.–1:30 p.m.	SFIA Annual Meeting
1:30 p.m.–2:30 p.m.	SFIA General Session
2:30 p.m.–5 p.m.	AWCI Board of Directors Meeting
3 p.m.–5 p.m.	SFIA Technical Committee
6:30 p.m.–10 p.m.	AWCI's 100th Anniversary White Diamond President's Welcome Reception at Epcot® <i>Sponsored by ClarkDietrich Building Systems and Hilti, Inc.</i> <i>Business casual, white attire optional</i>

Tuesday, March 27

7:30 a.m.–5 p.m.	INTEX Expo Registration Open
7:30 a.m.–9 a.m.	Education Sessions (See pages 5 to 8) <i>Coffee Break sponsored by Flex-Ability Concepts</i>
	Augmented Reality is the New Reality: Practical Applications of AR for Real World Problems
	Generation Next—Identifying Future Leadership and Trade Development
	Right From the Start
	OSHA Silica Rule Compliance
9:30 a.m.–12:15 p.m.	AWCI 100th Anniversary Opening Session and Awards Presentation Brunch <i>Sponsored by USG</i>
12:30 p.m.–5 p.m.	Grand Opening of INTEX Expo Exhibit Hall
6 p.m.–11 p.m.	AWCI's 100th Anniversary Celebration Night Dinner <i>Sponsored by National Gypsum</i> <i>Black Tie suggested</i>

* Assigned Members or Invitation Only



SCHEDULE

Wednesday, March 28

7:15 a.m.–12:30 p.m.	INTEX Expo Registration Open
7:30 a.m.–10 a.m.	Exterior Envelope–Doing It Right® Seminar - Part 1 of 2 Gypsum–Doing It Right® Seminar - Part 1 of 2 Stucco–Doing It Right® Seminar - Part 1 of 2
8 a.m.–9:30 a.m.	Education Sessions (See pages 9 to 12) <i>Coffee Break sponsored by L&W Supply</i> The Way to Go: Panelized Load-Bearing Design Tame the Flame: A Close Look at Exterior Wall Flammability with a Focus on NFPA 285 Future Trends and Emerging Technologies in the Market
9 a.m.–10 a.m.	Vinyasa Yoga Class
10 a.m.–1 p.m.	INTEX Expo Open Solutions Showcases
10:15 a.m. to 10:30 a.m.	Elite and Lean Team Intelligence <i>Presented by Plexxis Software</i>
10:45 a.m. to 11 a.m.	Bringing Digital Solutions to the Field <i>Presented by ClarkDietrich Building Systems</i>
11:15 a.m. to 11:30 a.m.	Future of Estimating <i>Presented by On Center Software</i>
1 p.m.–5 p.m.	Business Forums 1, 2, 3, 4, 5, 6, 7*
1 p.m.–5 p.m.	Exterior Envelope–Doing It Right® Seminar - Part 2 of 2 Gypsum–Doing It Right® Seminar - Part 2 of 2 Stucco–Doing It Right® Seminar - Part 2 of 2

* Assigned Members or Invitation Only

Exhibitors offer new technologies, products and tools to enhance your productivity and strategies to give you the competitive edge in your market.

Exhibitors *(As of November 16, 2017)*

- | | | |
|---|--|-------------------------------------|
| Aegis Metal Framing | EuroStone | Panel Rey |
| Allied Building Products | Extrutech Plastics Inc | Panolam Industries |
| Alpine TrusSteel | E-Z Taping System | Parex USA |
| American Gypsum | Fascan International, Inc. | Parkland Plastics, Inc. |
| Amerimix | Flex-Ability Concepts | PeerAssist |
| AMICO | Franklin International | Phillips Manufacturing Company |
| Armstrong Building Products | F-Sorb | Plastic Components, Inc. |
| Association of the Wall and Ceiling Industry/ AWC Media | Full Circle International Inc. | Plexxis Software |
| Award Metals | G&S Acoustics | Polser Fiberglas Levhalari |
| BASF Wall Systems | Georgia-Pacific Gypsum | PAZ. TIC. Ltd. STI. |
| BASWA Acoustic North America | Glasteel | PrimeSource Building Products, Inc. |
| BIK Hydraulics, Ltd. | Grabber Construction Products | Project DocControl |
| Blue Point Fasteners | Graco, Inc. | Pyrok, Inc. |
| Brighton-Best International | Greenmaker Industries | Radius Track Corporation |
| Castle Access Panels & Forms Inc. | Gypsum Management and Supply | RectorSeal |
| Ceilings & Interior Systems Construction Association | Hess Pumice Products, Inc. | Rockfon |
| CEMCO | HIAB USA Inc. | RockSteady |
| CertainTeed Corporation | Hilti, Inc. | ROCKWOOL |
| ClarkDietrich Building Systems | Insulation Solutions, Inc. | Ruco Equipment Company, Inc. |
| Clinch-On Cornerbead Company | International Fasteners, Inc. | Simpson Strong-Tie |
| Columbia Taping Tools | INTERCORP | Sound Seal |
| Coner Abrasive Mfg. Co., Ltd. | Interra USA, Inc | SPEC MIX, Inc. |
| Continental Building Products | IUPAT FTI | Spectra Precision - Trimble |
| Cooledge Lighting | JAACO Corporation | STACK Construction Technologies |
| Crane Composites | Jiangsu Jiuding New Material Co., Ltd. | Stanley Black & Decker |
| Custom Truck & Equipment, a UOS Company | Johns Manville | Star Sales & Distributing Corp. |
| Dryvit Systems, Inc. | Kinetics Noise Control | Steel Framing Industry Association |
| Dura-Stilt Sales Limited Partnership | L&W Supply | Sto Corp. |
| EDMA SAS | L.D. Peters & Sons, Inc. | TapeTech Tool Co. |
| The Estimating Edge | LaborChart | Telling Industries LLC |
| eSUB Inc. | Marino\WARE | Tool Source Warehouse |
| | Master Wall, Inc. | ToolPro |
| | MBA Metal Framing | Trademark |
| | Metaltech-Omega | Trimaco |
| | Nathan Kimmel Co., LLC | Trim-Tex, Inc. |
| | National Gypsum | USG |
| | Niles Building Products | V & H, Inc. |
| | Nudo Products Inc. | Walls & Ceilings Magazine |
| | Nu-Wave Manufacturing, LLC | XtremelInterior |
| | On Center Software, Inc. | |
| | PABCO Gypsum | |
| | PAC International | |
| | Palfleet | |



INTEX EXPO 2017 SPONSORS

INTEX Expo extends a special thank-you to the following sponsors:

(as of November 16, 2017)

Gold Level



Silver Level



INTEX EXPO 2017 SPONSORS

INTEX Expo extends a special thank-you to the following sponsors:

(as of November 16, 2017)

Bronze Level



AWCI Convention Mobile App

Sponsored by

Go Green!



Handouts from AWCI's Convention will be posted to AWCI's Convention website and placed on the convention mobile app on or about March 16. Attendees are encouraged to download and print the presentations ahead of time since handouts will not be distributed on site. The mobile app link and QR code will be emailed to attendees around March 16.

Dress

Business casual attire is appropriate for most functions.

For AWCI's White Diamond President's Reception at Epcot® on Monday, March 26, **white attire** is encouraged. For AWCI's 100th Anniversary Celebration Night Dinner on Tuesday, March 27, **black tie** is encouraged. See page 32 for information on renting a tuxedo for this event.

Welcome to Orlando!

There is more to do in Orlando than can be done in one visit. For information on everything to do in Orlando, airport transportation and **to buy discounted Disney parks tickets, visit AWCI2018. orlandomeetinginfo.com/.**



Accommodations

The official headquarters hotel and exclusive location for AWCI's Convention & INTEX Expo is the Walt Disney World Swan and Dolphin Resort, 1500 Epcot Resorts Blvd., Lake Buena Vista, Fla. AWCI and INTEX Expo attendees are extended special a single or double occupancy group rate of \$220 plus tax per night. Please note: AWCI group rates include the hotel resort fee.



The included resort fee provides unlimited domestic long distance and local calls, two complimentary bottles of water replenished daily, high speed internet in the guest room, unlimited admission to the hotel fitness centers featuring the Westin WORKOUT, and \$25 off spa services of \$100 or more at The Mandara Spa during each day of your hotel stay.

WELCOME TO ORLANDO!

Monday, March 5, is the cut-off date for room reservations, or earlier if the block of rooms sells out sooner. Reserve your room early online at AWCI.org/events/AWCI-convention/hotel-travel. For questions regarding your reservation, call (800) 227.1500 (Monday–Friday, 7 a.m.—11 p.m.; Saturday–Sunday, 7 a.m.—7 p.m.). Mention **AWCI18** or **Association of Wall and Ceiling Industry** for group rates and information.

Please ensure cancellations are made **at least 72 hours prior** to your scheduled arrival date in order to not be charged one night’s room and tax. If you depart earlier than your booked departure date, the hotel will charge a one night room and tax penalty. All guaranteed reservations that fail to arrive on the scheduled arrival date will be considered no-shows, and a charge of one night’s room will be posted to the credit card on file.

Beware any outside calls, emails or faxes you may receive for “discounted” rates for Orlando hotels. AWCI does not use a housing company for room reservations. These calls are often scams that could result in your credit card information being compromised and no hotel room reserved.

Getting There

Getting to Orlando is easy. Fly directly into the Orlando International Airport (MCO).

Ground Transportation to Walt Disney World Dolphin

Mears Motor Shuttle provides convenient and affordable transportation between the Orlando International Airport and the Walt Disney World Dolphin. To book online go to mears.com, click on Orlando, Florida from the drop down in the “Book a Ride” box. **When searching for the hotel name, it is under “D”** and listed as **“Dolphin Hotel At Disney**, 1500 Epcot Resorts Blvd. Orlando, FL 32830. Next enter the date you are arriving and the code 5582522079 in the “Promo Code” box in the lower left hand corner, to receive a \$4 discount off a round-trip booking. Current round-trip booking fees are \$37 (before discount) and \$23, one way, per person.

Taxi fares are about \$63 each way.

The nightly fees for parking are listed below and subject to change.

	Self Parking Fees	Valet Parking Fees
Non-Registered Guest*	\$20 for each exit	\$30 for each exit
Registered Guest **	\$20 + tax per day	\$30 + tax per day

*A non-registered guest is a guest who is visiting the hotel to use the facilities and services, but is not staying overnight.

**A registered guest has a room reservation to spend one or more nights at the hotel.

Let Us Do the Driving

Save time, money and the hassle of driving and parking. Almost anywhere you want to go at Walt Disney World Dolphin Resort is conveniently accessible by buses, which operate at approximately 20-minute intervals. For more information visit swandolphin.com/feedback/transportation.

AWCI'S CENTENNIAL CELEBRATION

You'll be part of a history-making industry meeting when you attend AWCI's Convention & INTEX Expo in Orlando, Fla., in March 2018. AWCI's centennial celebrations throughout the March 24–28 meeting are like none hosted by AWCI in the past.



Time Capsule

During AWCI's Convention in March 2018, AWCI will fill and seal a time capsule to be opened during AWCI's bicentennial celebration in 2118. AWCI members are invited to submit a message for future generations and associates of their company and send it to porinchak@awci.org, or post it on AWCI's Facebook page (www.facebook.com/awciwall, and please use the #AWCI100 hashtag). Or, visit the AWCI booth at the INTEX Expo and see the time capsule for yourself, and add your note. AWCI will take steps to preserve the notes so that they will be readable in 100 years.

White Diamond President's Reception

Fireworks at Epcot® are a great way to start! Instead of the one-hour reception held in the past, this extended version, which is March 26 from 6:30 p.m. to 10 p.m., will feature heavy hors d'oeuvres and be held in the Epcot® American Adventure Rotunda. This exclusive location means RSVPs are required for both bus transportation and entrance into the event. *(See page 29 for details on how to make sure you don't miss this event.)*

Opening Session/Awards Brunch

Again AWCI is breaking with tradition by not awarding a Pinnacle Award in 2018. Why? Because AWCI is the star of the show! Attend the brunch to see a new video on the history of AWCI, then look to the future with the keynote speaker, Jack Uldrich. The opening session starts at 9:30 a.m. on March 27. *(See page 30 for more information.)*

Celebration Night Dinner

AWCI goes formal for the dinner and auction on March 27, and the moment will be captured in a photograph that will be put on display at AWCI headquarters. Attendees will be asked to grab a seat for a group photo, so please be on time—be there by 6 p.m.! After that, browse auction items, catch up with friends and colleagues, and have your own photo taken by our pro photographer. Each couple will receive a copy of their photo in a commemorative AWCI frame. *(See pages 31 and 32 for more information.)*

AWCI's Construction Dimensions

In celebration of 100 years of AWCI, AWCI's magazine has been publishing articles related to the history of the industry and AWCI since July 2017. But the March 2018 issue, the one that will be distributed to all attendees of AWCI's Convention & INTEX Expo, is a special collector's edition focusing everything from vintage history to the future. You won't want to miss it!

More Surprises

Those are the big highlights, but we don't want to ruin all the fun by telling you *everything*. You'll have to attend the convention to see what else is in store! Keep an eye on AWCI's convention website (www.awci.org/convention) and AWCI's social media sites for updates.





Dear SFIA member,

We hope that you are able to join us at the 2018 Steel Framing Industry Association Annual Meeting and General Session.

As in years past, this year's Annual Meeting is designed to bring you up-to-date on SFIA's ongoing efforts to advance our industry through education, promotion and advocacy of more favorable codes and standards—and to prepare you with the actionable intelligence you need to address and take advantage of construction and design innovations, emerging technologies and new regulatory developments.

I'd also like to remind you that over the next several days, you'll have many opportunities not only to share information with colleagues, but also to contribute your ideas for new programs and services that you would like to see from SFIA.

On behalf of SFIA, we look forward to making this year's event an informative and profitable experience.

Best,

Eric Griswold

Sunday, March 25

4 p.m.–6 p.m.

SFIA Manufacturers Council+

Monday, March 26

8 a.m.–Noon

SFIA Board of Directors Meeting+

1 p.m.–1:30 p.m.

SFIA Annual Meeting

With the growing economy, 2018 is expected to provide sustained growth in construction spending resulting in increased opportunities for the cold-formed steel framing industry.

The SFIA has also grown stronger with the addition of nearly 300 members including steel mills, suppliers/distributors and a 10 percent increase in new manufacturer members.

In 2017, the association's efforts to address the pushback on the gains made by the wood industry have begun to get significant traction. These efforts and the collaboration with other industries and community partners promise to result in significant new opportunities for cold-formed steel framing.

What are some of the new opportunities? How has SFIA grown? How do you tap into resources available to enhance your business planning?

Join us at the SFIA Annual Meeting and learn about our industry efforts in building code advocacy, research and educational opportunities.

1:30 p.m.–2:30 p.m. SFIA General Session

The 2018 SFIA General Session is a must for companies that manufacturer, supply and install cold-formed steel framing. The session is free to SFIA and AWCI members, as well as all INTEX Expo attendees. Register at awci.org/events/awci-convention/register or contact Larry Williams, SFIA's executive director, at (williams@steel framingassociation.org), or Emma Goodgion (emma@steel framingassociation.org).

3 p.m.–5 p.m. SFIA Technical Committee

The SFIA Technical Committee meets for updates on ongoing research to review and guide industry efforts on standards and code provisions and to create technical products in appropriate formats needed by members in the marketplace.

+ Assigned or Invited Members Only



Association of the Wall and Ceiling Industry
513 W. Broad Street, Suite 210, Falls Church, VA 22046-3257



**Your registration information for AWCI's
Convention & INTEX Expo 2018 is enclosed.
REGISTER NOW!**